



HOUSE & LAND PACKAGE

315 HIGHLAND DRIVE, ACACIA BAY, TAUPŌ

\$1,590,170*

GRANDVIEWS FROM YOUR LANDMARK

4  2.5  2  1 

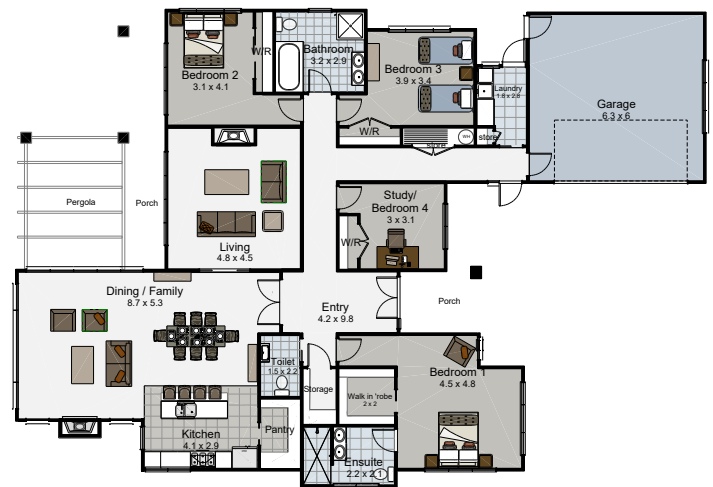
Welcome to Grandview Estate, where your dream home becomes a reality! Nestled in the hills above Acacia Bay in the heart of one of the most sought-after neighbourhoods with expansive views of Lake Taupo.

The Lakeside Ready to Build Design features high sloped ceilings in the kitchen, dining and family areas, and 2.7m high ceilings throughout.

A separate lounge is accessed through double cavity sliders off the more casual living area and all living spaces have a flow to the outdoor areas.

The master suite, positioned for morning sun, is separated from guest or family bedrooms.

As one of New Zealand's bespoke premium building companies we pride ourselves on offering both a quality service and finish, as we take you on your own "Landmark" journey.



SPECIAL FEATURES

- Central Otago pavilion-style design
- High sloping ceilings in kitchen, dining and family rooms
- Gas fire in lounge and family room
- Extra height windows for sun and views
- Abundant storage and spacious rooms
- Weatherboard and plaster exterior

DIMENSIONS

Total Living Area	224.8m ²
Garage Area	40.0m ²
Total Floor Area	264.8m ²
Land Area	3624m ²



*NB: These images are an indication of what could be built on the site for the package price.
**NB: This does not include any site-specific requirements that may be needed for a lifestyle section.
Negotiation and purchase of this House & Land package will be directly through Landmark Homes Taupo.

CONTACT US TODAY
07 376 8528
sales@landmarkhomestaupo.co.nz